

TOOLS

- Tape measure
- Ladder/step ladder
- Straight edge/metal ruler
- Applicator squeegee (supplied)
- Stanley knife
- Fine sandpaper (if required)
- 'Viponds' Self Adhesive Prep coat (if required)

Surface Preparation

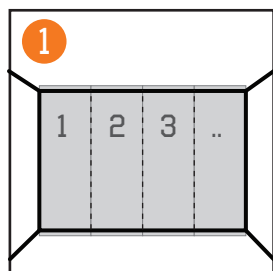
Inspect your walls for any defects such as cracks, peeling paint or bumps and repair as required to ensure a smooth surface. Remove any obstacles such as picture hooks, light switch plates/surrounds etc.

Using the sample supplied, apply to the wall to ensure the wallpaper will adhere. The sample should stick to the surface with reasonable tack whilst still being able to be peeled off without damage to the wall.

If you are unsure, leave the sample applied to the wall overnight and check that it's still applied in the morning. If the sample does not feel like it is sticking to the wall or the sample edges peels off the wall overnight we suggest undercoating the wall in Viponds Self-Adhesive Prep Coat. Further info about this undercoat is available at www.viponds.com.au or you can contact our helpful team on 1300 4 GRAFICO (1300 447 234) or info@grafico.com.au.

Grafico Installers Tip

The smoother and cleaner the wall the better-finished product you will have!



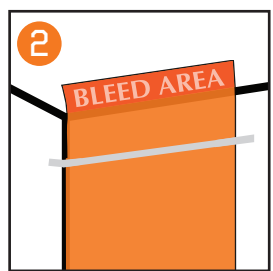
STEP 1

Prepare your drops for installation

Start from the left hand side of the wall with the wallpaper drop indicated as "No.1" and then sequentially as per your labeled wallpaper panels.

Grafico Installers Tip

Unroll all of your drops and put in order so there is no confusion on what drop goes where.



STEP 2

Position drop no.1

Starting with drop 1, line up the left edge with the vertical line of your wall. Line up the top edge with your ceiling, allowing for the additional 30mm bleed along the top which can be trimmed off at the end of the installation. Allow the rest of the drop to unravel, ensuring it is straight and square to the wall.

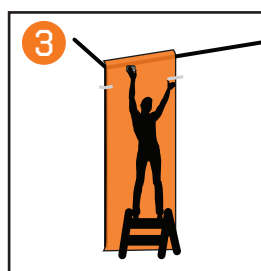
Note: 'Bleed' is additional vinyl which has been printed to allow for uneven walls or any discrepancies in your measurements. Each 'drop' has 30mm of bleed on the top and bottom.

Place masking tape across drop 1 approx 100mm down the drop, securing it in place.

Peel the wallpaper away from the backing paper and cut the backing paper off with a stanley knife.

Grafico Installers Tip

Take your time lining up drop 1 as if this is applied straight, it will make the rest of your installation much easier!



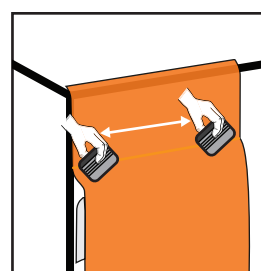
STEP 3

Apply drop no.1

Lightly tack the exposed section of the wallpaper to the top of your wall. As it is only lightly tacked, you can reposition the drop as required. If you are butting the wallpaper into another wall use the vertical left hand edge as your square edge. When you are happy with the position of drop 1, apply it securely onto your wall with the provided application squeegee using the **felt edge** side only.

Grafico Installers Tip

Only use the felt edge side of the application squeegee to ensure the prints are not scratched or damaged in anyway.



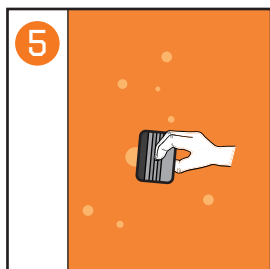
STEP 4

Complete application of drop no.1

Slowly and evenly pull down the backing sheet in small sections (approx. 300mm at a time). Working in a left to right motion with your squeegee, apply the wallpaper film to the wall. As you work down the wall, continue peeling back the backing sheet to expose the adhesive side of the film. Keep applying the film in a left to right motion keeping the squeegee edge flat to the wall. Apply using reasonably firm pressure to ensure any bubbles can be pushed out.

Grafico Installers Tip

Use your 2nd installer to ensure the bottom of the drop stays straight as you apply the wallpaper film to the wall.



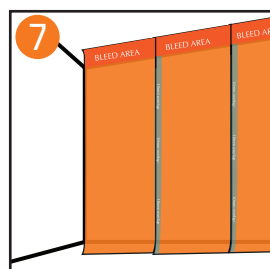
STEP 5

Wrinkles & Bubbles

If there are wrinkles or bubbles in your print at the end of the application of drop no.1 smooth out using your squeegee or peel back the film and re-apply the affected area. Avoid using too much pressure as you may damage or permanently crease the film.

Grafico Installers Tip

If you can't find any bubbles, try shining a torch on the surface to locate any hiding bubbles/wrinkles.



STEP 7

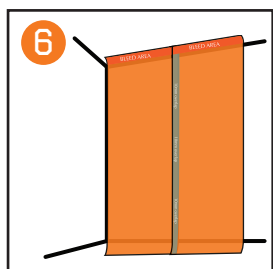
Apply Additional Drops

Once you have marked your bleed line, repeat steps 2 to 6 until all drops have been applied to the wall.

IMPORTANT! Align the drop at the top of the wall whilst your 2nd installer helps you align at the base.

Grafico Installers Tip

Keep a sharp eye on the top middle and bottom ensuring the prints line up as best possible before applying the entire drop.



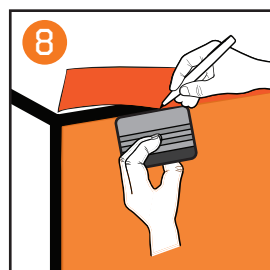
STEP 6

Check Your Overlaps/Joins

All 'drops' of wallpaper are printed with a 10-15mm overlap.

Place the next drop 10-15mm over the right hand edge of the previously installed drop. Adjust to line up the print/design as best as required.

We recommend placing a small piece of masking tape in 2-3 points down your wall which will act as your vertical line when applying your next drop.



STEP 8

Trimming

Once all your drops have been applied to the wall, use a sharp blade/knife to remove any excess print on the top/bottom or sides of the wall.

Grafico Installers Tip

Make sure your knife/blade is sharp and use a new blade to ensure a clean trim line. If you are unsure about trimming a straight line try using a long edge ruler.

TRIMMING AROUND LIGHT SWITCH PLATES & POWER POINTS

- Remove switch plate covers.
- Using your supplied application squeegee smooth the wallpaper film and crease unto the top of the edge of the power-point surround.
- Carefully trim the excess wallpaper around the power point.
- Make an incision using a sharp blade in the center of the power point
- Carefully extend the incision to the inside corner of each switch.
- Using firm pressure with your squeegee seal the wallpaper around the edges of the power point.

Don't Forget...

If you have any questions please don't hesitate to contact our team on 1300 447 234 or info@grafico.com.au